



**CONCERN**  
worldwide

**Transforming the Lives  
of Extreme Poor People  
in Bangladesh**

**Annual Review 2012-14**



For more information, please contact:  
Sadia Hossain  
sadia.hossain@concern.net

Photo credits : Concern Worldwide, Bangladesh,  
Sadia Hossain, Shafiqul Alam Kiron,  
Habibul Haque, Shehab Uddin, Mahmud, Amin

© Concern Worldwide, Bangladesh, 2015

Design & Production:  
Head Office Communication  
House 50, Road 10A,  
Dhanmondi R/A, Dhaka 1209



## Country Director's Message

**It is my great pleasure to present to you the programmatic achievements of Concern Worldwide, Bangladesh from 2012 to 2014.**

Concern aims to support people living in extreme poverty and vulnerability through its humanitarian response and long term development programmes focusing on livelihood, health, nutrition and education, while addressing inequality, disaster risk and impact of climate change as cross-cutting themes. We have introduced digital data-gathering and analysis techniques for monitoring and evaluating our work, using which we measure the key outcome indicators in all our programmes annually.

Over the last 3 years, we have continued our steady progress towards achieving our organisational objectives, and maintained a high level of achievement in Bangladesh. These achievements in programmatic results, including our success in helping people graduate out of extreme poverty, have been captured in this book.

None of these achievements would have been possible without the continuous support of the people we work for, the Government of Bangladesh, the partner organisations, and the institutional and individual donors. I take this opportunity to thank you all, and look forward to our future collaborations to end extreme poverty in Bangladesh.

A handwritten signature in black ink, appearing to read 'A. K. M. Musha'.

**A. K. M. Musha**  
Country Director  
Concern Worldwide, Bangladesh



# **Our Identity**

# About Concern Worldwide

Concern Worldwide is a non-governmental, international, humanitarian organization dedicated to the reduction of suffering, and working towards the ultimate elimination of extreme poverty in the world's poorest countries.

## Our vision

To work towards a world where no-one lives in poverty, fear or oppression; where all have access to a decent standard of living and the opportunities and choices essential to a long, healthy and creative life; a world where everyone is treated with dignity and respect.

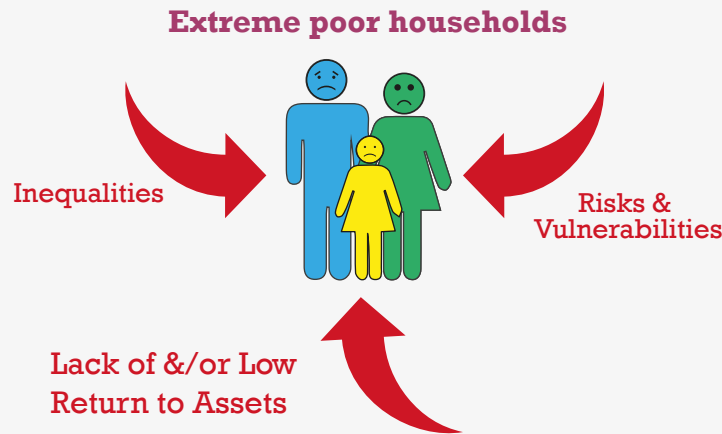
## Our mission

To help people living in extreme poverty achieve major improvements in their lives which last and spread without ongoing support from Concern Worldwide. To achieve this mission, we engage in long term development work, respond to emergency situations, and seek to address the root causes of poverty through education and advocacy.

# Concern Worldwide in Bangladesh

Founded in 1968, Concern Worldwide was formally established in Bangladesh in 1972.

Over the last 43 years in the country, we have been working relentlessly to alleviate extreme poverty by focusing on these 3 dimensions - i) the lack of and/or low return to assets, ii) inequalities, and iii) risks and vulnerabilities.



How we  
understand  
extreme poverty

Using a programmatic approach to best tackle the emerging poverty pockets, we have structured our work into different contexts - Urban, Char, Haor and Coastal programmes, along with our Emergency response programmes. We work through direct partnerships with 35 implementing organizations, including various consortia, coalitions and humanitarian clusters.

All our programmes are designed with interventions at 3 levels: micro - at the community and union levels; meso- at the sub-district and district levels; and macro- at the national level. Working at these 3 levels, we aim to reduce extreme poverty by addressing hunger, maternal and child health, primary education, inequality, and disaster risk reduction in Bangladesh.

# Our Guiding Objectives

**Our ultimate goal is not a short-term escape from extreme poverty; rather, we want our programme participants to sustain themselves even after our programmes are over.**

We want to enable more than 6,00,000 men, women, and children currently targeted by our programmes to graduate out of extreme poverty permanently, or to make significant improvements which will allow them to move out of extreme poverty.

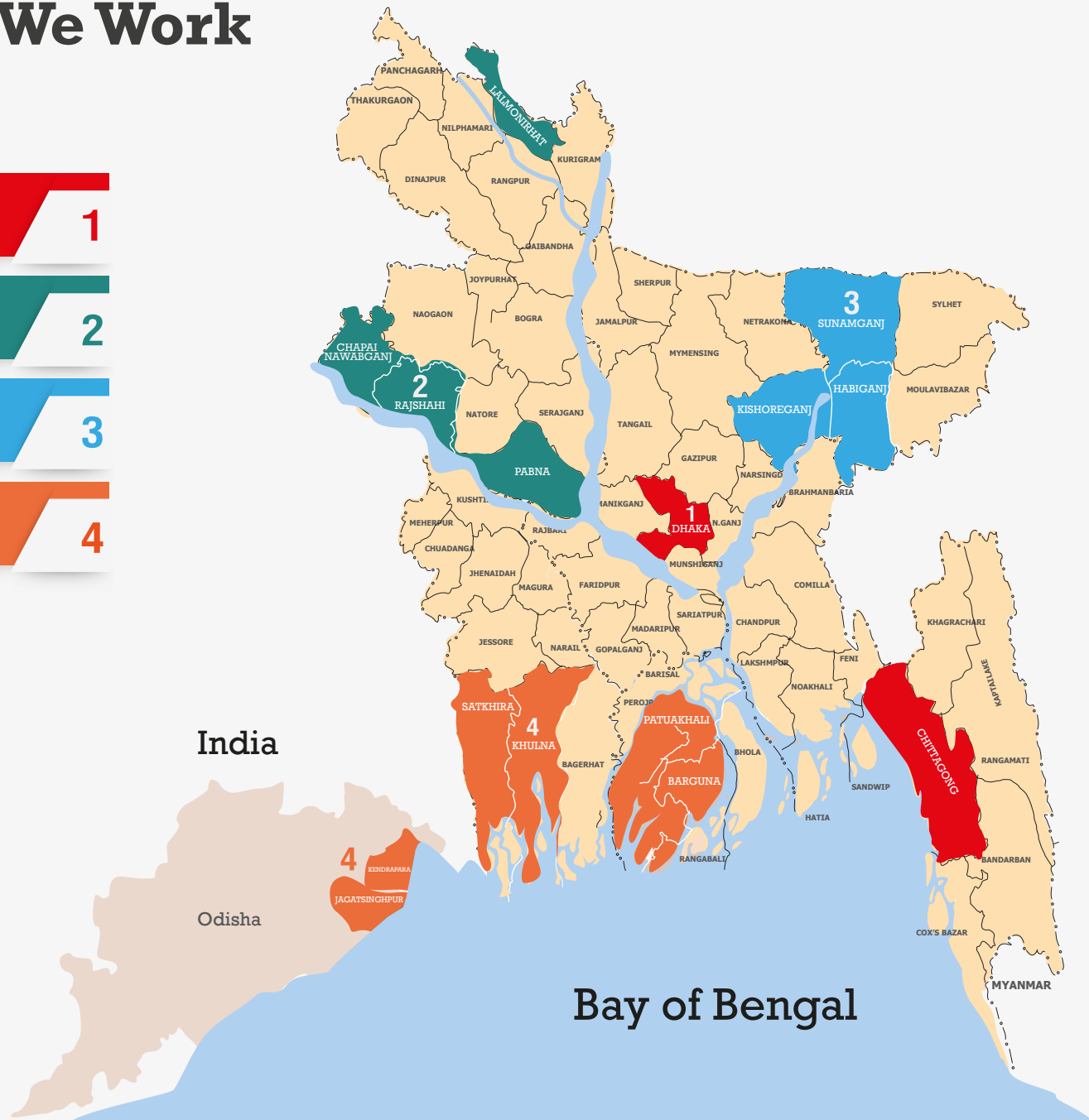
This will be defined in 2 ways- through our context-specific poverty analyses, and also the national poverty lines. This overall objective is linked to the overarching goal of the Government of Bangladesh to reduce poverty from 31.5% in 2010 to 13.5% by 2021 set in the Perspective Plan of Bangladesh 2010-2021.

Our  
Country  
Strategic Plan  
2011-15  
states 5 specific  
objectives:

- 1** Freedom from hunger through increased incomes & assets. 
- 2** Access to maternal & child health care services. 
- 3** Access to education for all children of primary school age. 
- 4** Respect & equal treatment for extreme poor or socially excluded people. 
- 5** Protection from loss of life, injury, or asset due to natural disasters or climate change. 

# Where We Work

- Urban Programme** 1
- Char Programme** 2
- Haor Programme** 3
- Coastal Programme** 4





# How We Measure Our Work

Since 2013, we have been using Digital Data Gathering (DDG) – a custom-built mobile application for real-time data collection, to conduct our Annual Outcome Monitoring and Graduation Survey for all programmes in 2013 and 2014.

Our innovative DDG process uses a cloud-based platform developed by PSI Mobile, which allows us to gather data faster and more efficiently than paper-based methods. It also yields data that is more reliable and of a higher quality. With DDG, we are able to manage and analyse data quickly and cost-effectively. This helps us monitor our performance accurately, and make effective decisions accordingly.

## The DDG process

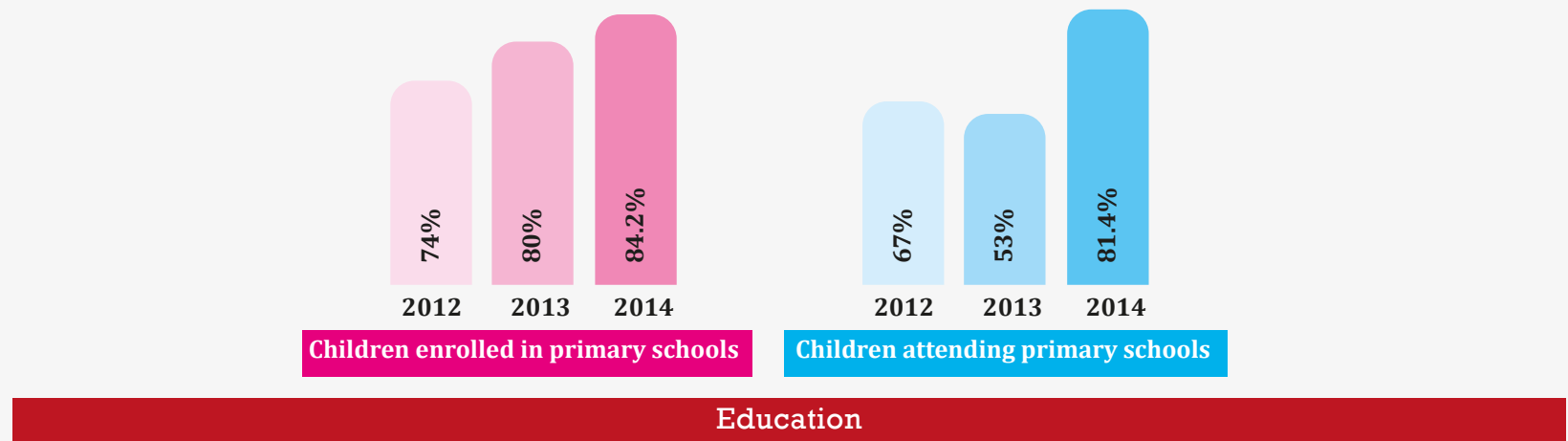
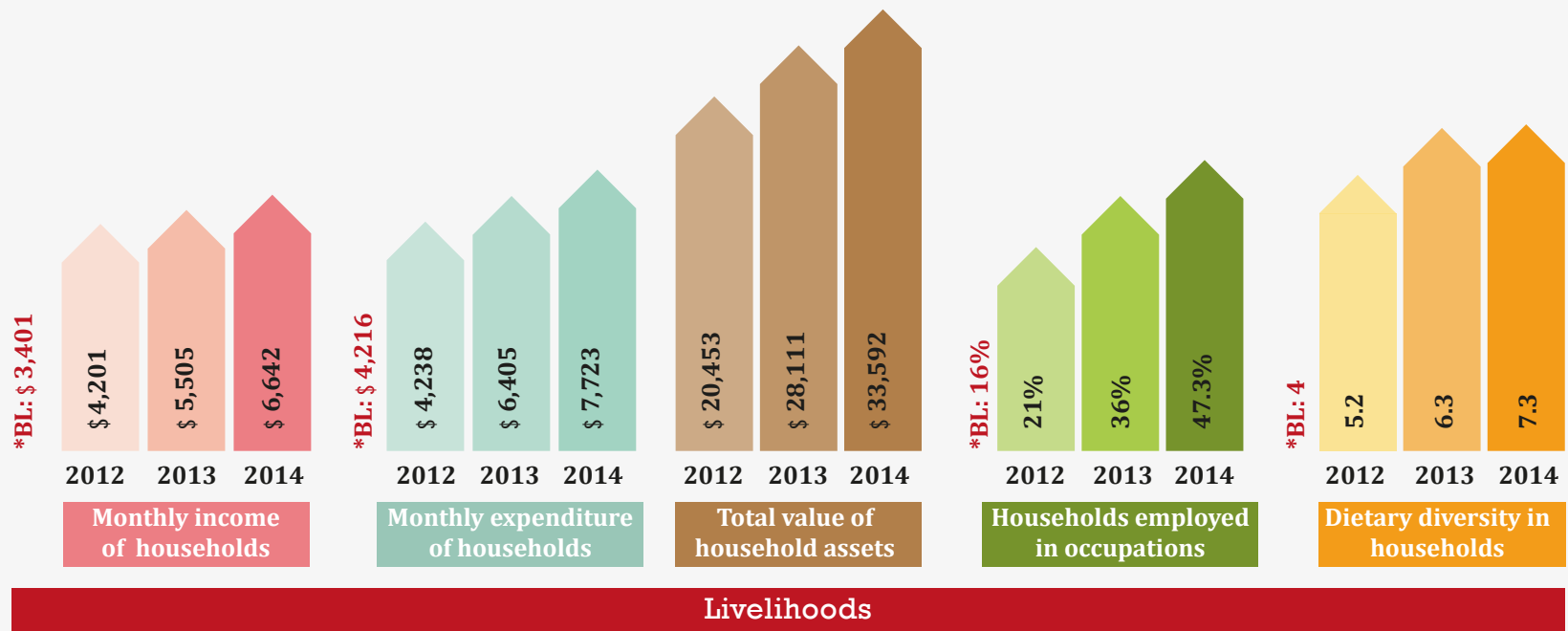


The background of the slide is a complex geometric pattern of overlapping squares and triangles in various shades of green, ranging from dark forest green to light lime green. The pattern is centered and covers the entire page.

# **Our Achievements**

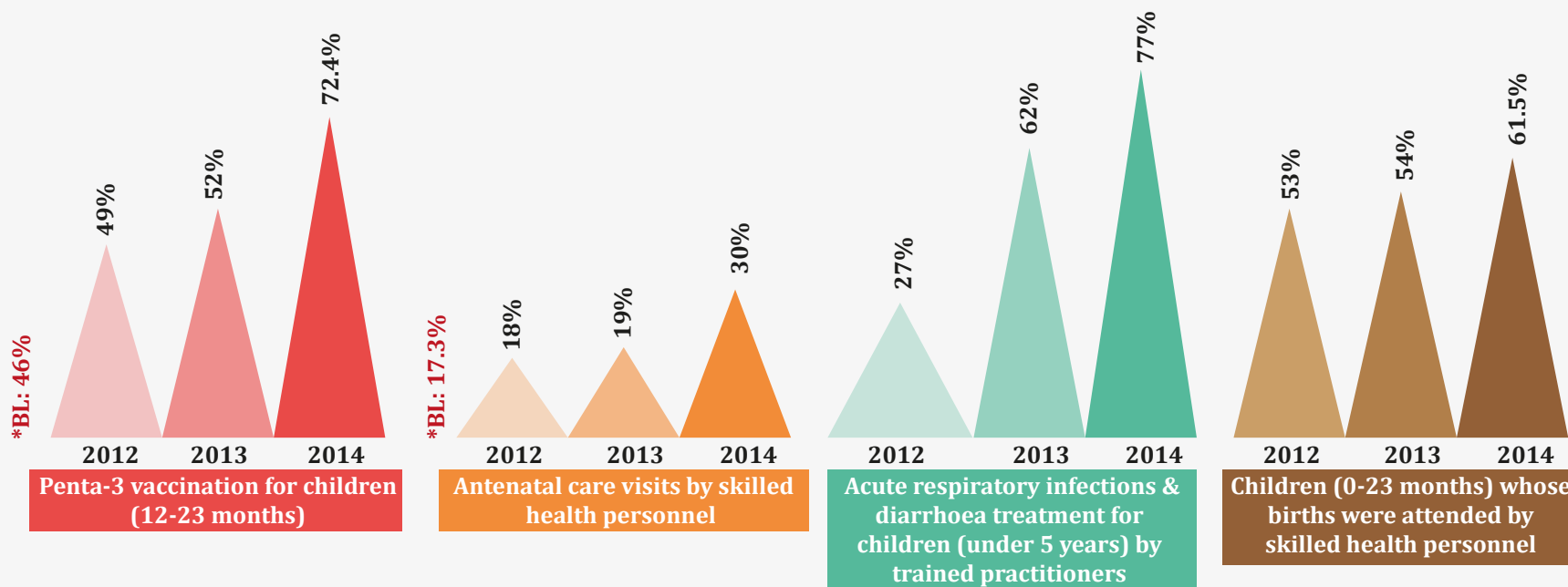
## **Programmatic Results, 2012-14**

# Our Programmatic Results, 2012-14

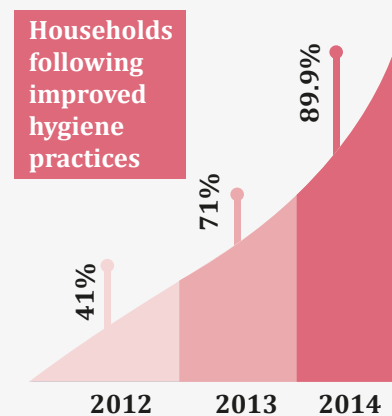
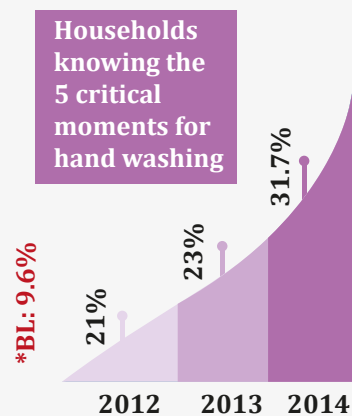
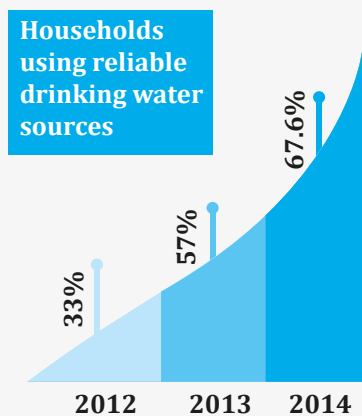


\*BL - Baseline (2011)

# Our Programmatic Results, 2012-14



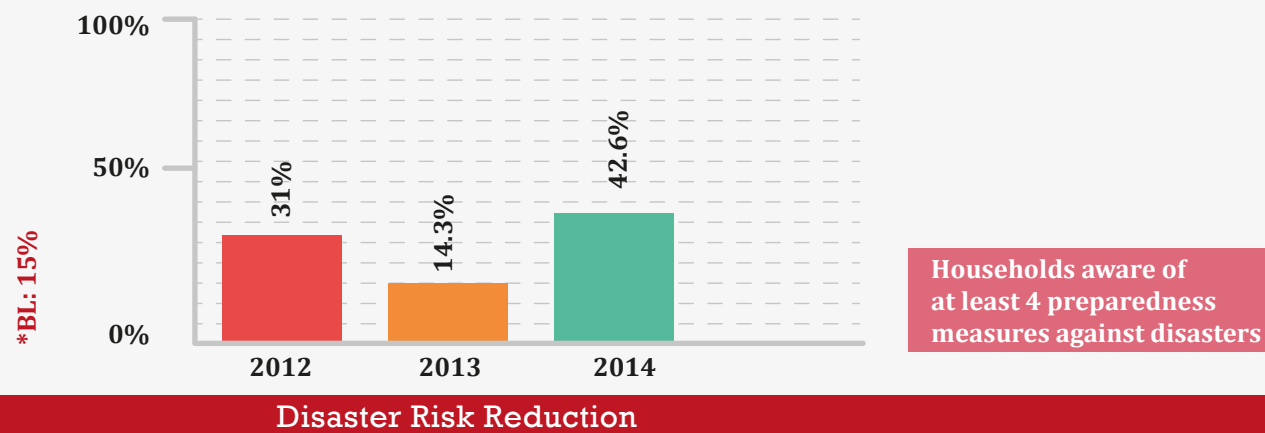
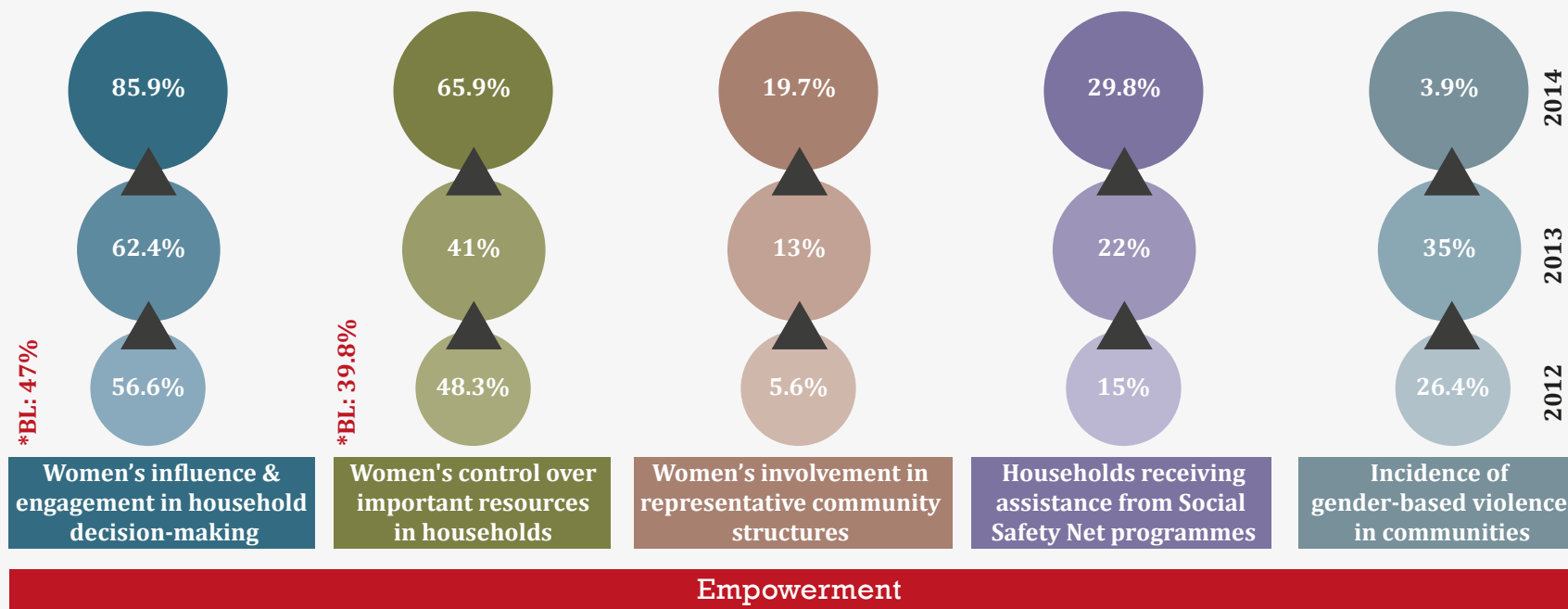
## Health



## Water, Sanitation & Hygiene

\*BL -Baseline (2011)

# Our Programmatic Results, 2012-14



\*BL -Baseline (2011)



**Programmatic Results, 2012-14:**  
**Geographic Areas**

# URBAN INTEGRATED PROGRAMME



## PROGRAMME GOAL

To transform the lives of urban pavement & squatter dwellers by improving their lives & livelihoods, & addressing their issues of rights & entitlement.

## SECTOR FOCUS

Livelihoods, Health & Education

## WORKING AREAS

Dhaka & Chittagong

PLANNED DURATION

2012 – 2016

PROGRAMME BUDGET

BDT 472,707,050

(until 2015)

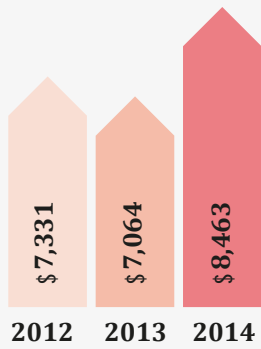
DIRECT BENEFICIARIES

22,456

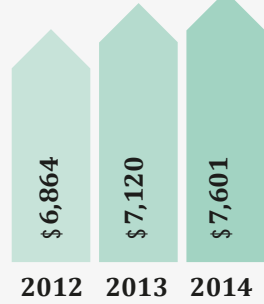
♂ 8,541 ♀ 13,915

# Urban Integrated Programme

\*BL: \$ 5,013



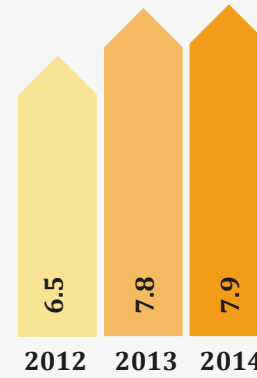
Monthly income of households



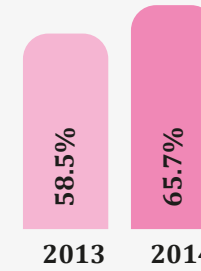
Monthly expenditure of households



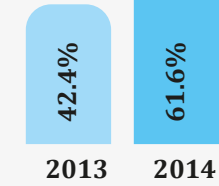
Total value of household assets



Dietary diversity in households



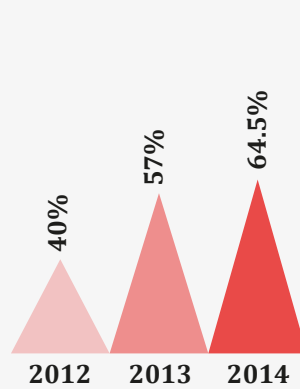
Children enrolled in primary schools



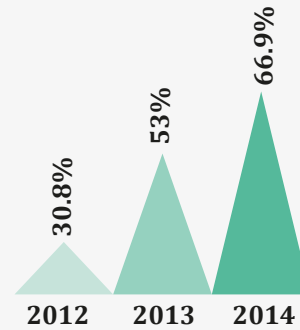
Children attending primary schools

## Livelihoods

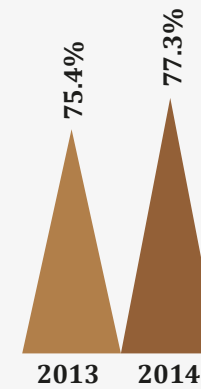
## Education



Penta-3 vaccination for children (12-23 months)



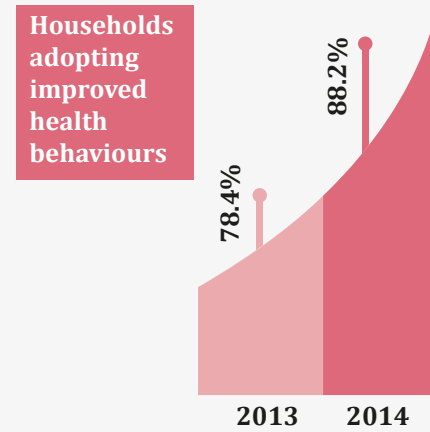
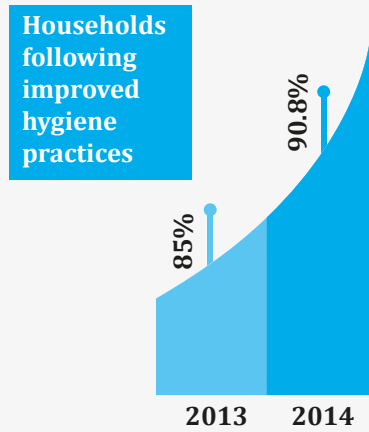
Antenatal care visits by skilled health personnel



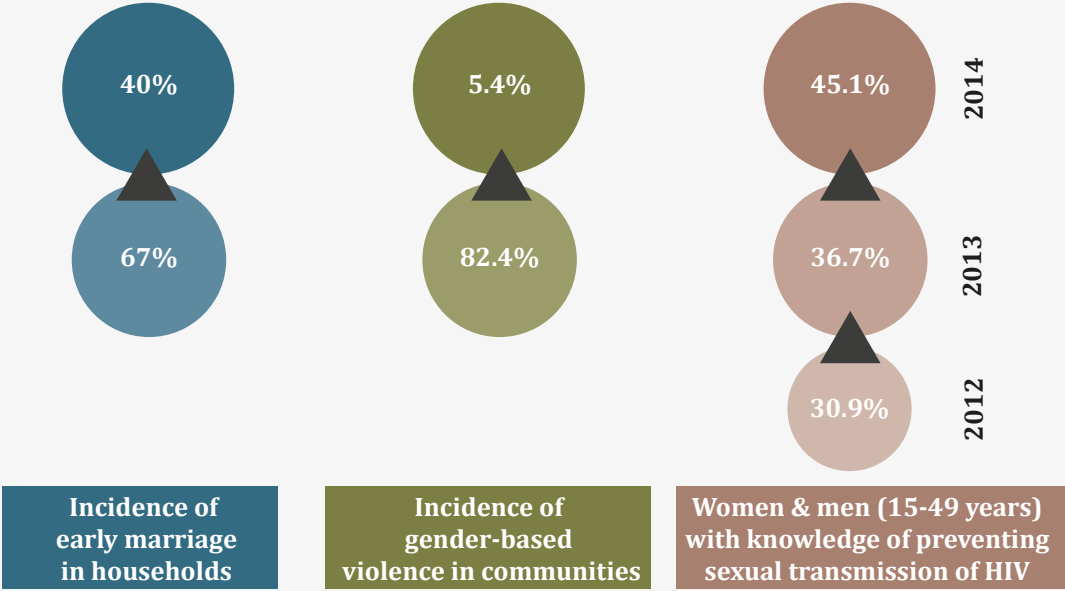
Acute respiratory infections & diarrhoea treatment for children (under 5 years) by trained practitioners

## Health





Water, Sanitation & Hygiene



Empowerment

# CHAR INTEGRATED PROGRAMME



PLANNED DURATION

**2011 – 2016**

PROGRAMME BUDGET

**BDT 371,634,068**

(until 2015)

## PROGRAMME GOAL

To enable extreme poor households in remote chars of Bangladesh move out of extreme poverty.

## SECTOR FOCUS

Livelihoods, Health & Education

## WORKING AREAS

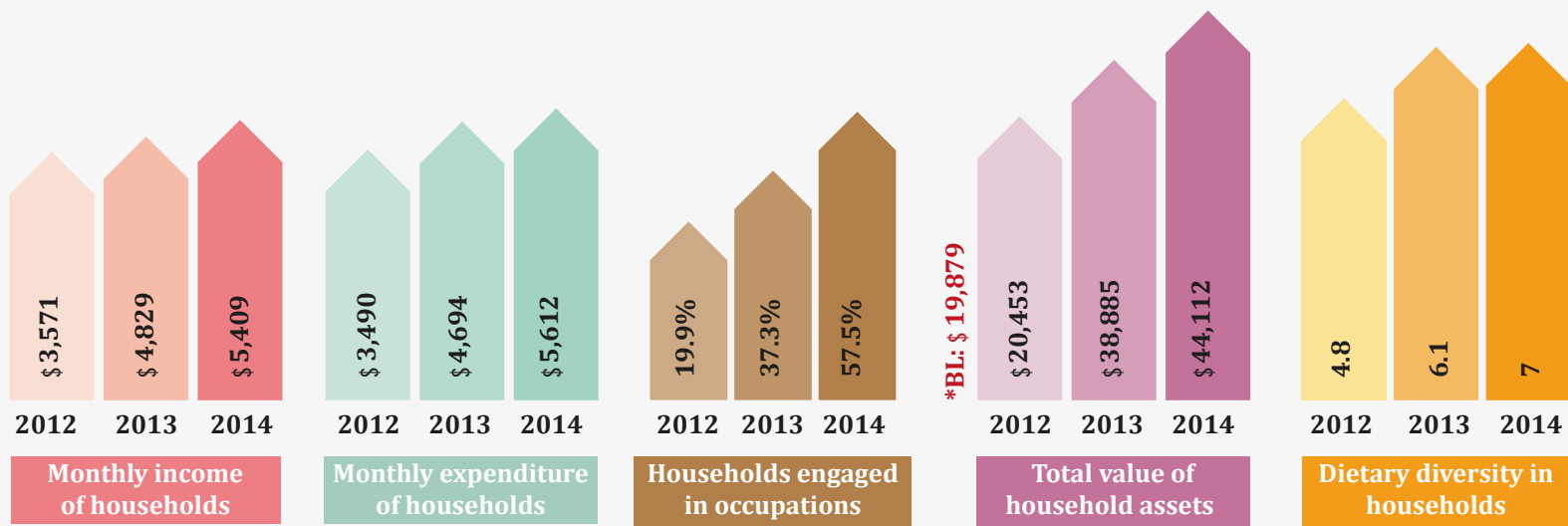
Pabna, Rajshahi,  
Chapai Nawabganj,  
& Lalmonirhat

DIRECT BENEFICIARIES

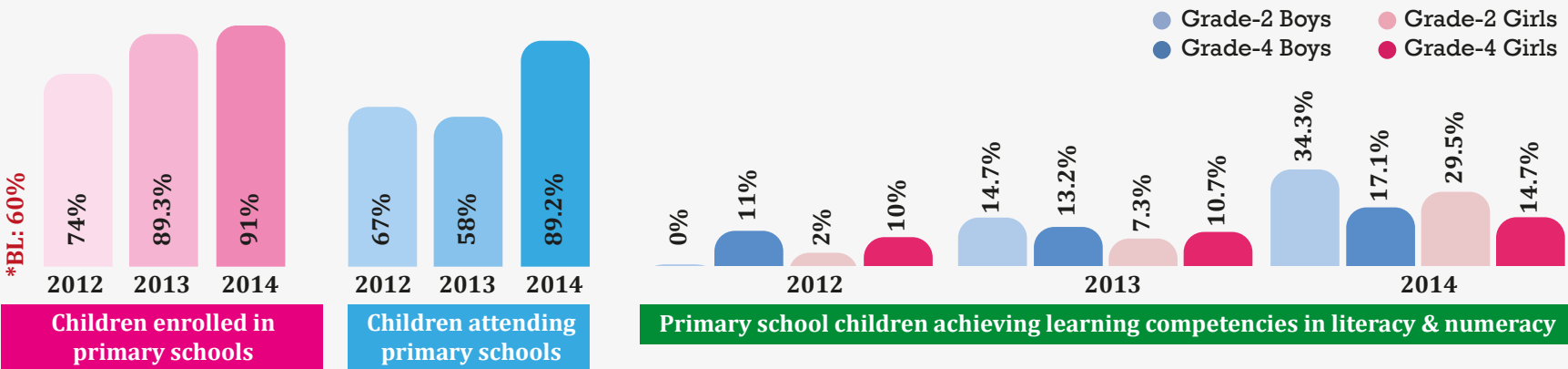
**80,049**

 **39,289**  **40,760**

# Char Integrated Programme

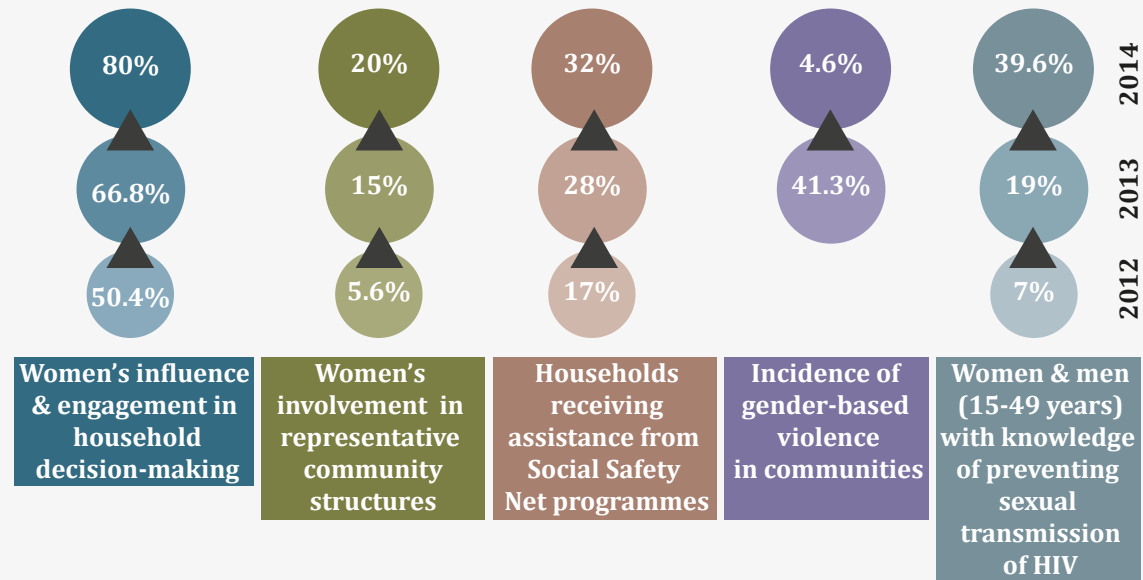
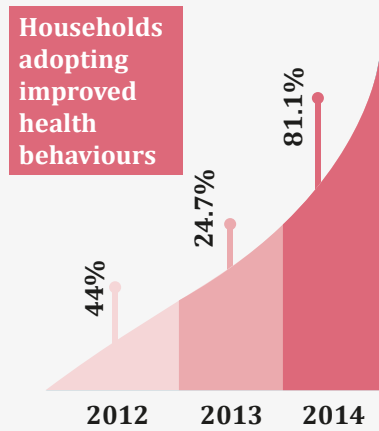
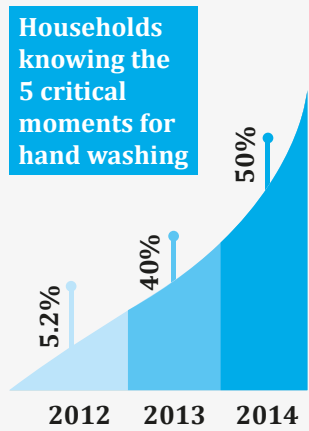


## Livelihoods



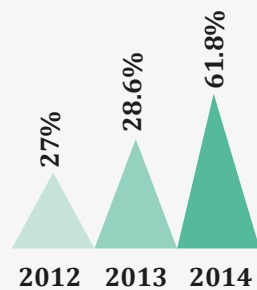
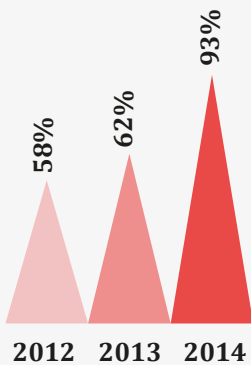
## Education

\*BL -Baseline (2011)



Water, Sanitation & Hygiene

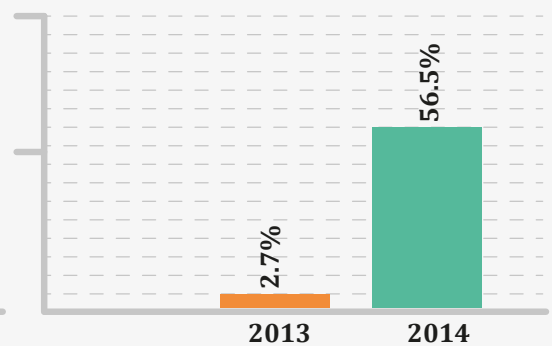
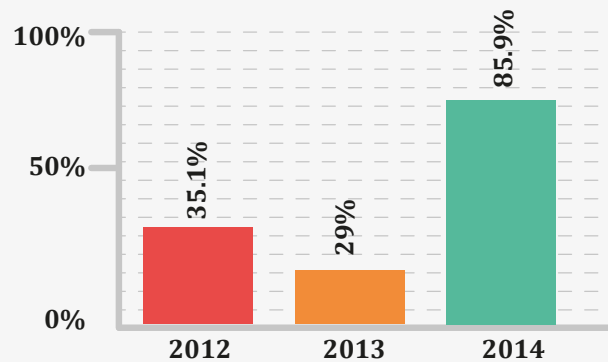
Empowerment



Penta-3 vaccination for children (12-23 months)

Acute respiratory infections & diarrhoea treatment for children (under 5 years) by trained practitioner

Health



Communities aware of early warning messages

Households aware of at least 4 preparedness measures against disasters

Disaster Risk Reduction

# HAOR DEVELOPMENT PROGRAMME

## PROGRAMME GOAL

To enable extreme poor household move out of extreme poverty in haors of Bangladesh, & empowering them to exercise their rights & entitlements.

## SECTOR FOCUS

Livelihoods, Nutrition & Water, Sanitation & Hygiene

## WORKING AREAS

Kishoreganj,  
Sunamganj,  
& Habiganj

PLANNED DURATION

**2011 – 2015**

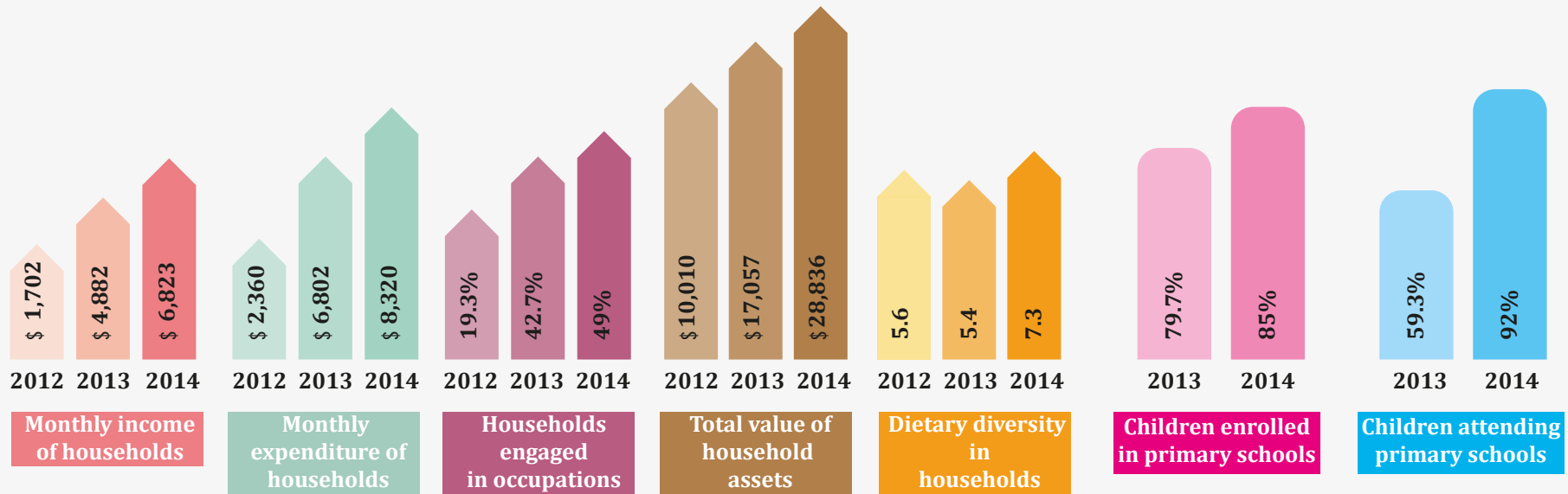
PROGRAMME BUDGET

**BDT 387,822,457**

DIRECT BENEFICIARIES

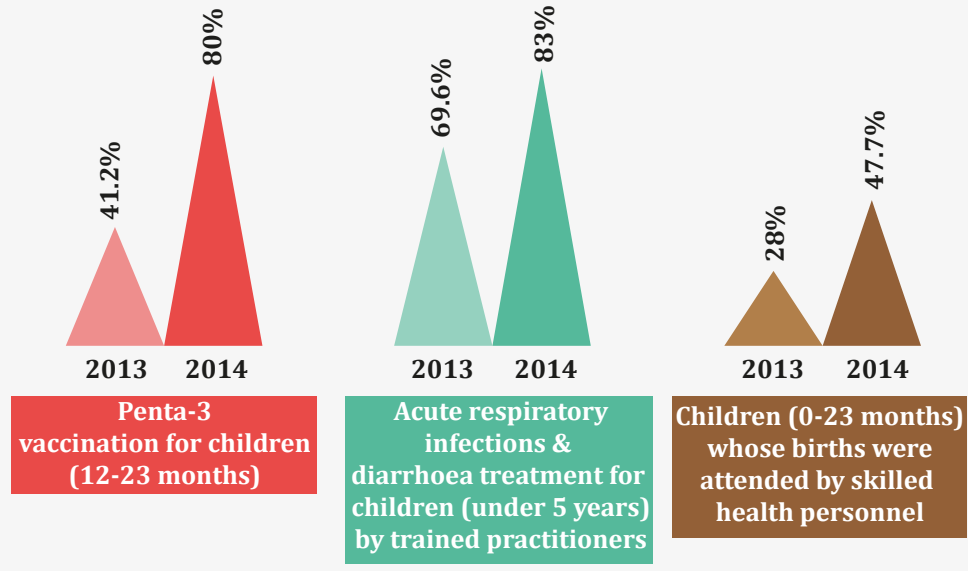
**101,250**

**♂ 60,536 ♀ 51,964**

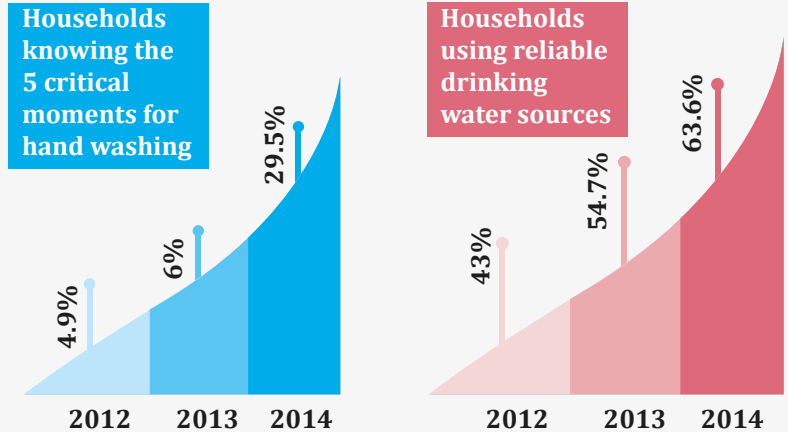


Livelihoods

Education

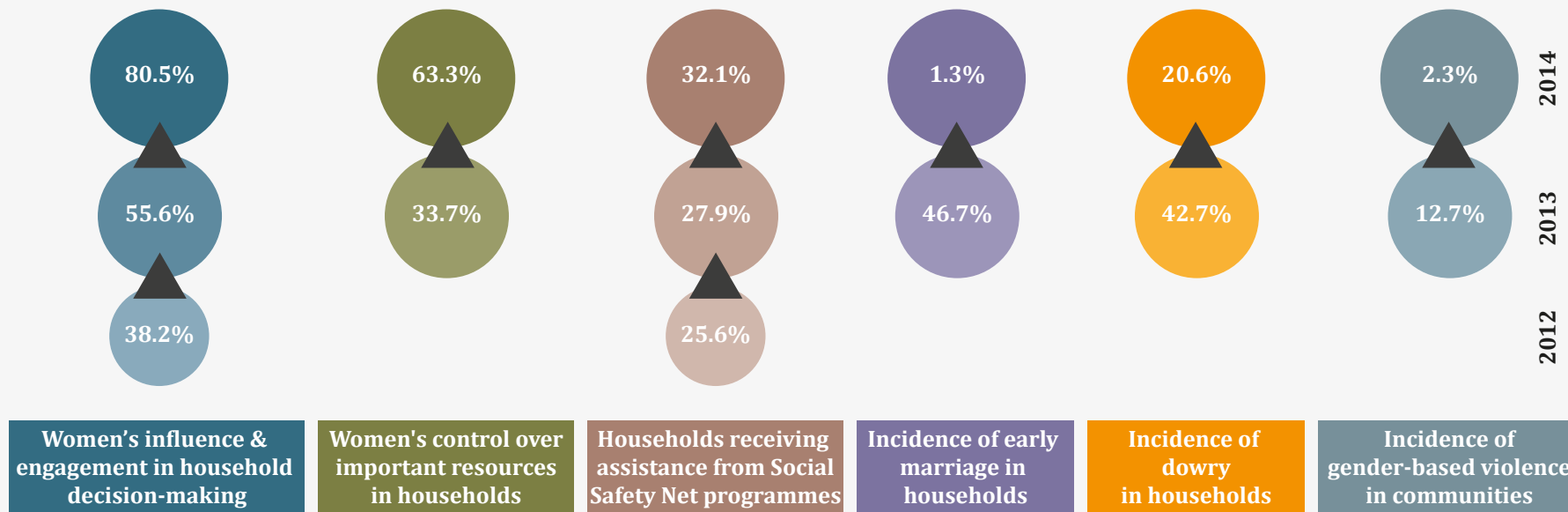


Health

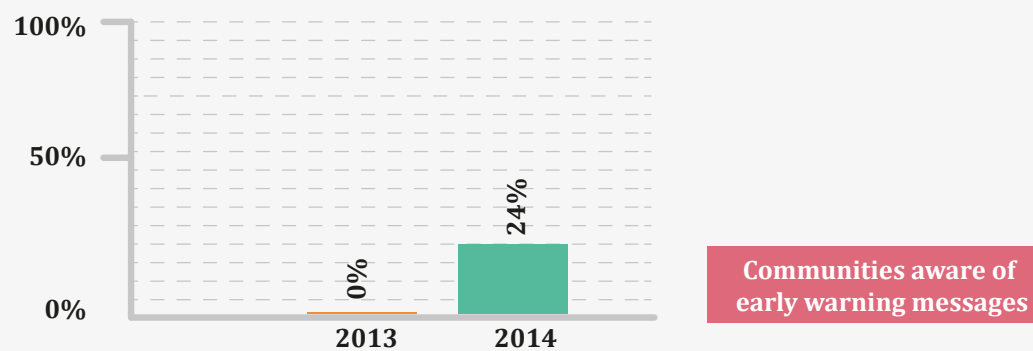


Water, Sanitation & Hygiene

# Haor Development Programme



## Empowerment



Communities aware of early warning messages

## Disaster Risk Reduction

# COASTAL PROGRAMME



PLANNED DURATION

**2011 – 2016**

PROGRAMME BUDGET

**BDT 432,726,768**

## PROGRAMME GOAL

To reduce extreme poverty amongst the most vulnerable communities in coastal areas of the Bay of Bengal by improving their livelihoods & reducing their risk & vulnerabilities to the impacts of hazards & climate change.

## SECTOR FOCUS

Livelihoods

## WORKING AREAS

Khulna, Satkhira,  
Barguna & Patuakhali  
in Bangladesh;  
Jagatsinghpur &  
Kendrapara in India

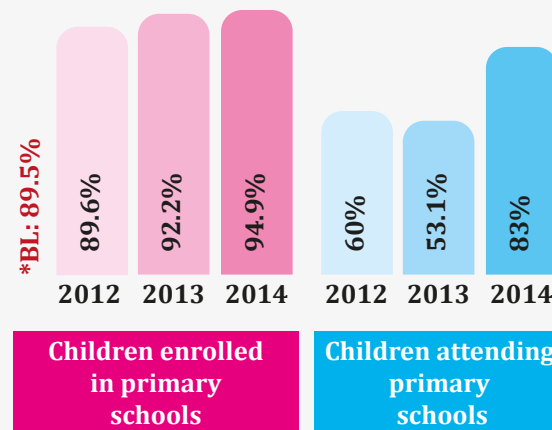
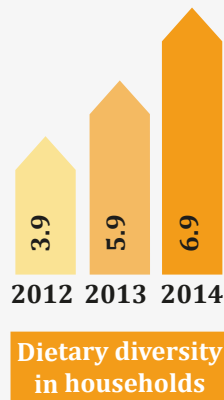
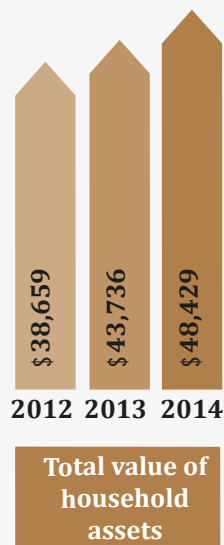
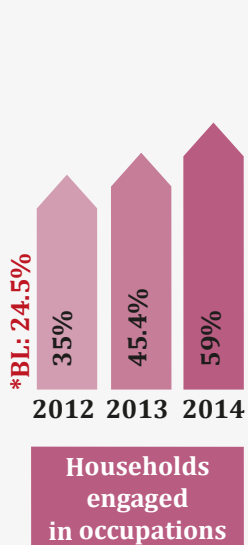
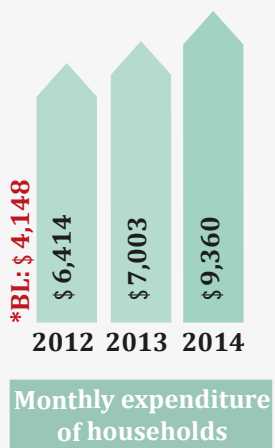
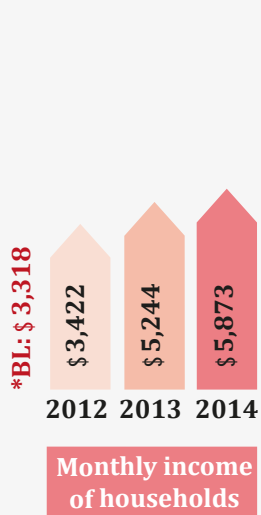
DIRECT BENEFICIARIES

**199,477**

♂ 97,790 ♀ 101,687

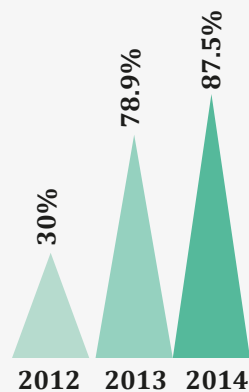
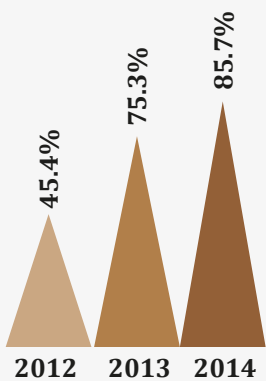
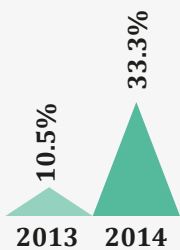
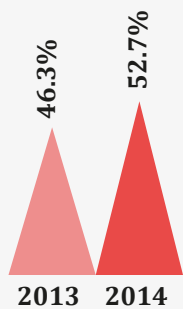


# Coastal Programme



## Livelihoods

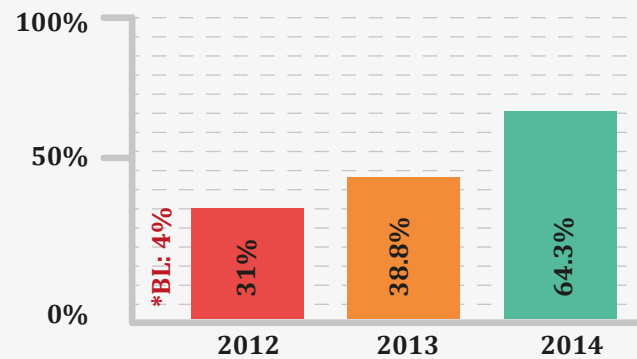
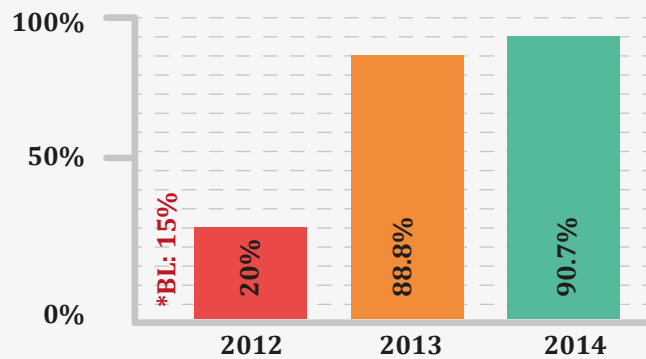
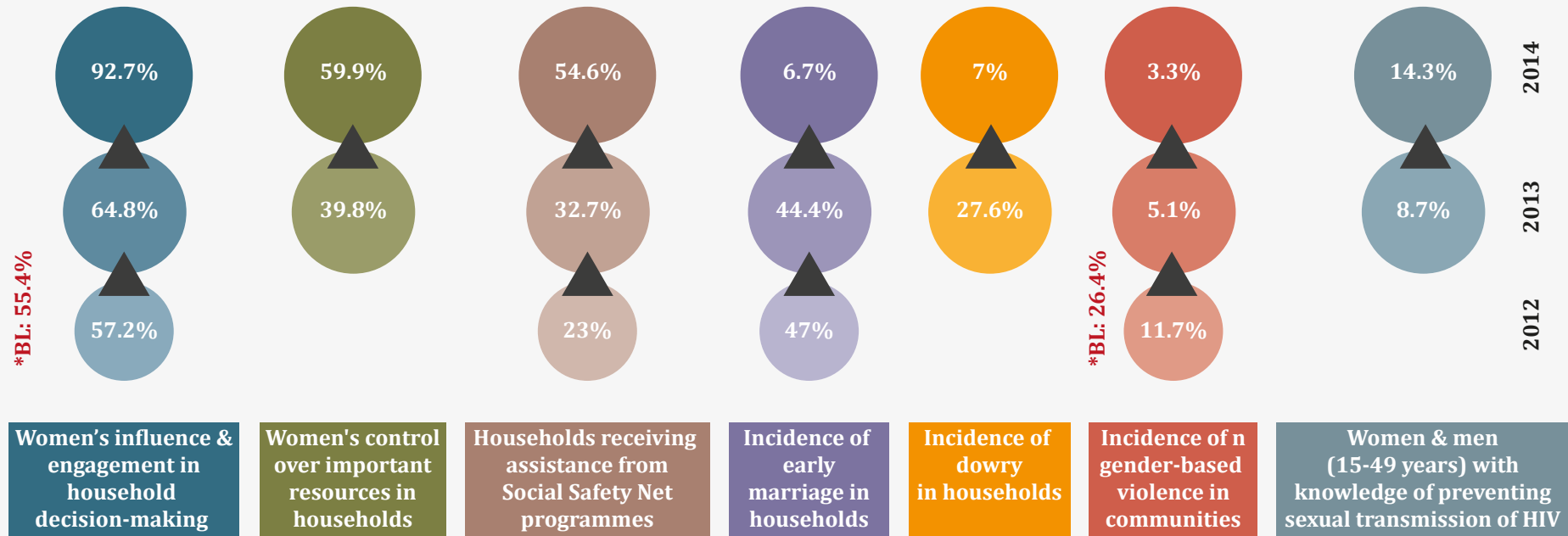
## Education



## Health

## Water, Sanitation & Hygiene

\*BL -Baseline (2011)



Communities aware of early warning messages

Households aware of at least 4 preparedness measures against disasters

**Disaster Risk Reduction**

# DISASTER PREPAREDNESS PROGRAMME 2012-14

## DIPECHO-VI: A Disaster Resilient Future: Mobilising communities & institutions for effective risk reduction:

### PROGRAMME GOAL

To enable local communities & institutions prepare for, mitigate & respond adequately to natural disasters through capacity building of stakeholders.

**BUDGET (2012)** BDT 1,598,892

### SECTOR FOCUS

Disaster Preparedness & Mitigation

### DURATION

March 2011 - September 2012

### WORKING AREAS

Wards 2, 3, 5, 6 & 7 of Dhaka; Belkuchi & Sirajganj Sadar Upazilas in Sirajganj

### DIRECT BENEFICIARIES

18,154

## DIPECHO-VII: Building a Disaster Resilient Bangladesh

### PROGRAMME GOAL

To increase resilience & establish a culture of DRR among communities & institutions vulnerable to natural hazards in urban & rural Bangladesh.

**BUDGET** BDT 49,271,346

### SECTOR FOCUS

DRR: Livelihoods & people-centric early warning messages

### DURATION

February 2013 - December 2014

### WORKING AREAS

8 Unions of Sirajganj Sadar, Belkuchi & Kazipur Upazilas in Sirajganj.

### DIRECT BENEFICIARIES

352,000

# EMERGENCY RESPONSE PROGRAMMES 2012-14

<b>EMERGENCY RESPONSE 1:</b>	<b>SECTOR FOCUS</b>	<b>WORKING AREAS</b>
Emergency assistance support to Waterlogging-affected populations in Bangladesh	Cash-for-Work schemes; Cash-For-Training	3 Unions of Keshabpur Upazila in Jessore
<b>BUDGET</b> BDT 268,289,301	<b>DURATION</b>	<b>DIRECT BENEFICIARIES</b>
	February 2012 – June 2012	<b>14,370</b>
<b>EMERGENCY RESPONSE 2:</b>	<b>SECTOR FOCUS</b>	<b>WORKING AREAS</b>
Flood REsistant SHelter for South-West region in Bangladesh (FRESH)	Shelter; Water, Sanitation & Hygiene	6 Unions of Keshabpur & Monirampur Upazilas in Jessore
<b>BUDGET</b> BDT 132,909,028	<b>DURATION</b>	<b>DIRECT BENEFICIARIES</b>
	February 2012 - January 2013	<b>7,570</b>
<b>EMERGENCY RESPONSE 3:</b>	<b>SECTOR FOCUS</b>	<b>WORKING AREAS</b>
Humanitarian aid in favour of communities affected by Cyclone Mahasen in Bangladesh - Part 1	Cash-for-Work schemes & Livelihood grants	6 Unions of Kalapara Upazila in Patuakhali
<b>BUDGET</b> BDT 35,350,000	<b>DURATION</b>	<b>DIRECT BENEFICIARIES</b>
	September 2013 - February 2014	<b>10,520</b>

# EMERGENCY RESPONSE PROGRAMMES 2012-14

## EMERGENCY RESPONSE 4:

Food security assistance to the most vulnerable & poorest households affected by waterlogging in Bangladesh

**BUDGET** BDT 36,416,218

## SECTOR FOCUS

Cash-for-Work schemes & Livelihood grants

## DURATION

March 2014 - September 2014

## WORKING AREAS

4 Unions of Shyamnagar & Kaligonj Upazilas in Satkhira; 4 Unions of Paikgacha Upazila in Khulna

## DIRECT BENEFICIARIES

7,631

## EMERGENCY RESPONSE 5:

Humanitarian assistance in favour of communities affected by Cyclone Mahasen in Bangladesh - Part - 2

**BUDGET** BDT 20,697,600

## SECTOR FOCUS

Cash-for-Work schemes & Livelihood grants

## DURATION

May 2014 - November 2014

## WORKING AREAS

2 Unions of Taltali Upazila in Barguna; 1 Union of Kalapara Upazila in Patuakhali

## DIRECT BENEFICIARIES

7,650

## EMERGENCY RESPONSE 6:

Early recovery efforts to meet immediate needs of flood-affected people in north-west Bangladesh

**BUDGET** BDT 37,980,415

## SECTOR FOCUS

Cash-for-Work schemes & Livelihood grants; Health: Clean & safe water.

## DURATION

October 2014 - December 2014

## WORKING AREAS

1 Union of Sariakandi Upazila in Bogra; 2 Unions of Sirajganj Sadar Upazila, and 3 Unions of Kazipur Upazila in Sirajganj

## DIRECT BENEFICIARIES

17,278



# **Our Graduation Measurement**

# Our Graduation Criteria

According to our understanding of the root causes of extreme poverty - i) the lack of, and/or low return to assets, ii) inequalities, and iii) risks and vulnerabilities, we have set the following indicators for determining our Graduation Criteria.

## Assets & Return on Assets

**1** Per capita income per day:  
 > BDT **47** (Rural<sup>1</sup>);  
 > BDT **54** (Urban<sup>2</sup>)

**2** **3** meals all year round

**3** Productive assets:  
 > BDT **10,000** (Rural);  
 > BDT **7,500** (Urban)

**4**  Cash savings:  
 > BDT **1,500**

**5**  Accommodation:  
 Owning a house with more than **1** roof; or,  
 house with market price of more than  
 BDT **15,000** (Rural); Living in a  
 rented room for at least **6** months (Urban)



**6** Primary school enrolment:  
 All children aged  
 6-12 years go to school



**7** Access to safe drinking water



**8** Access to sanitary latrines



**9** Practice of proper hand-washing techniques with soap



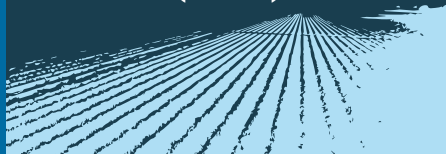
<sup>1</sup> Rural context - Char Integrated Programme, Haor Development Programme & Coastal Programme

<sup>2</sup> Urban context - Urban Integrated Programme

## Inequality

10

Access to own or lease cultivable land (Rural)



11

Women's participation in household decision-making for:

- a. Child bearing
- b. Children's education
- c. Children's marriage
- d. Purchase of necessary goods
- b. Food consumption & cooking



## Risks & Vulnerabilities

12

At least **2** sources of income



13

Coping strategies regarding food-habits in times of financial constraints:

- a. No household member has scored less than **4** for Household Dietary Diversity in the last 7 days.
- b. No household member has eaten food in smaller portions in the last 7 days.
- c. No household member has purchased food on credit in the last 7 days.



14

Workdays lost due to illness: Less than **4** work days lost in the last **30** days by the head of the household

For the Urban context, the proposed Graduation Threshold is 7 out of 13\* criteria.

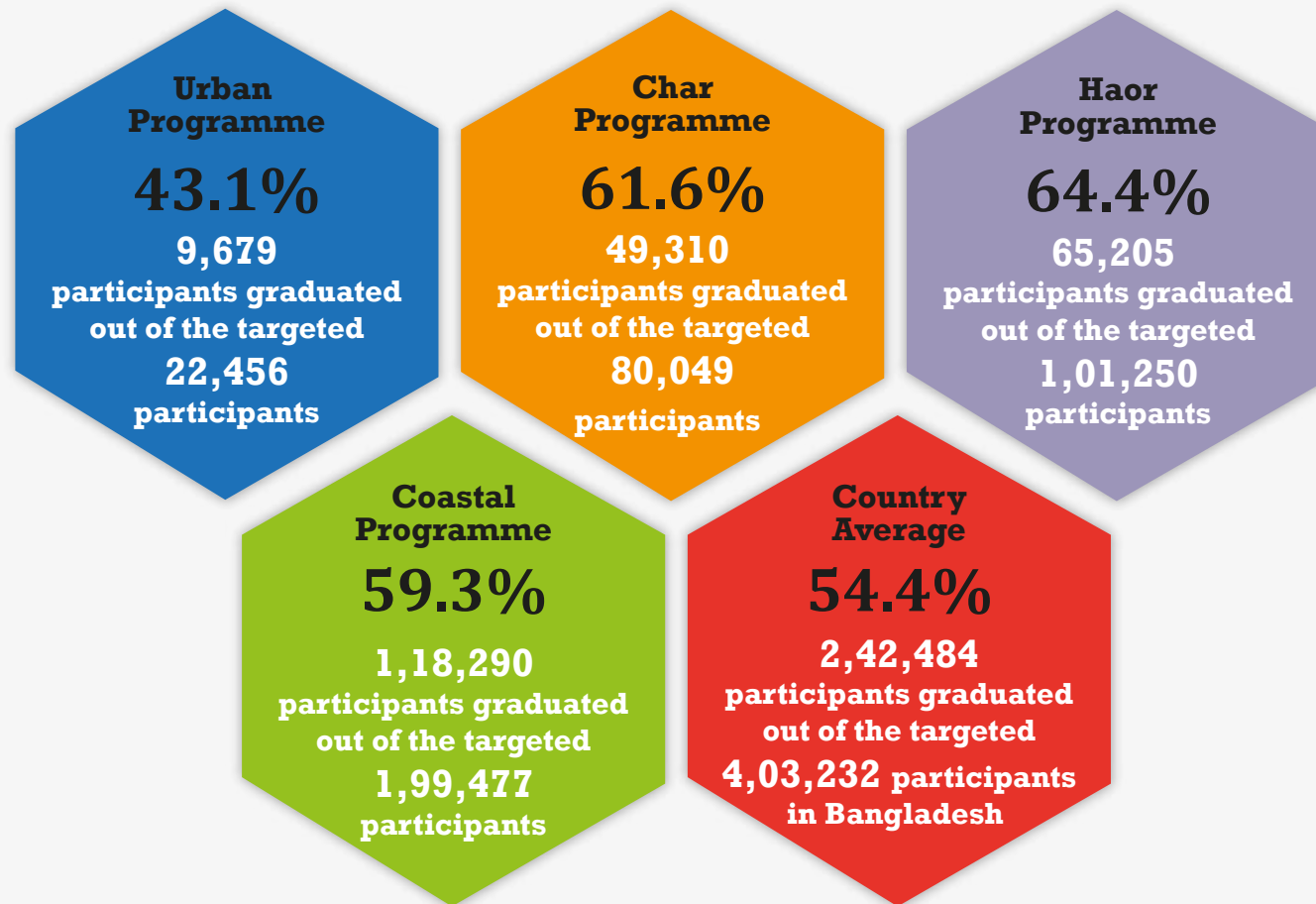
For the Rural contexts, the proposed Graduation Threshold is 8 out of 14 criteria.

\*Criteria 10 is not applicable for the Urban context.



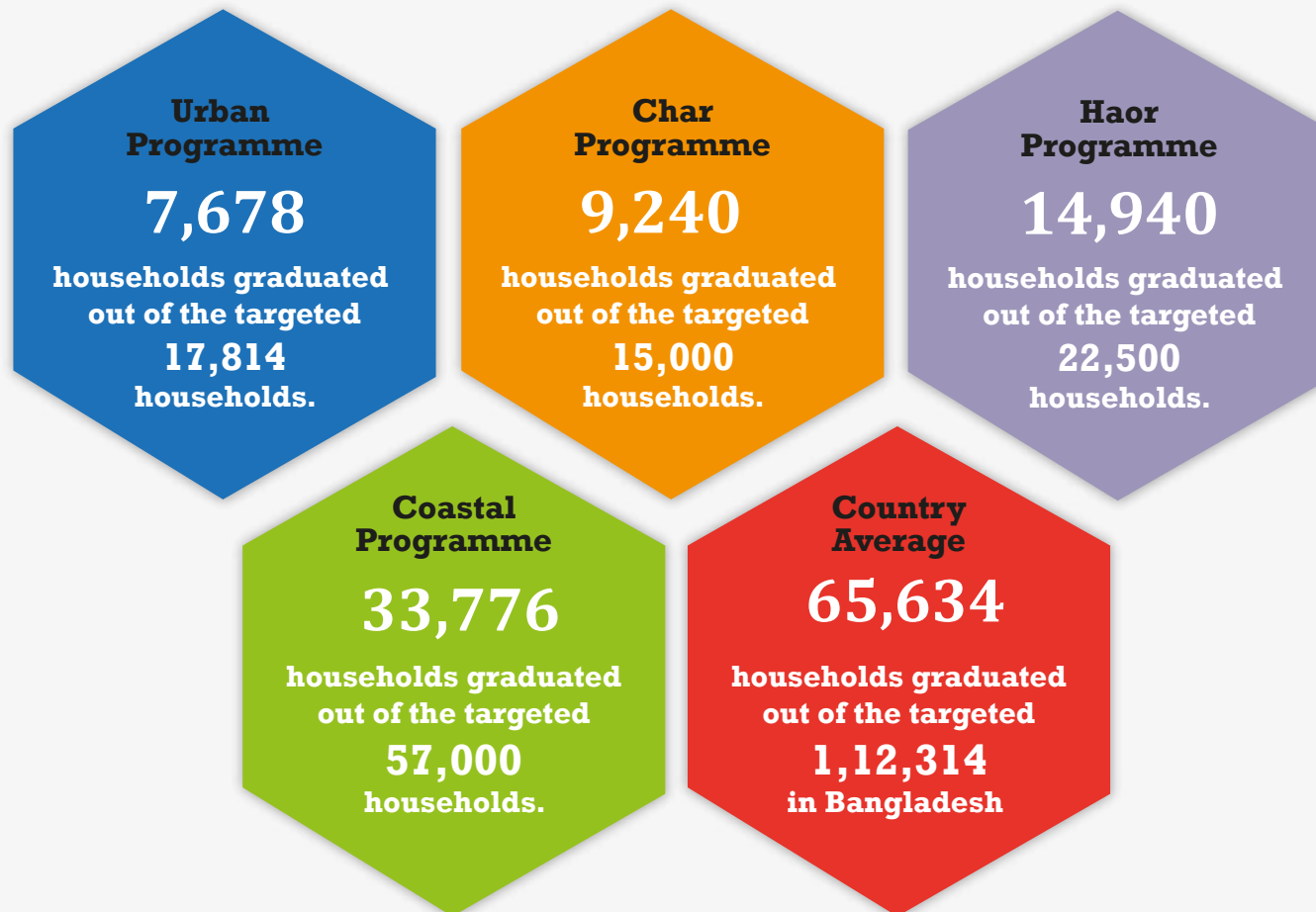
# 2014 Graduation Status\*: Participants

We aim to enable our programme participants graduate out of extreme poverty permanently.



\*Based on random sampling

# 2014 Graduation Status\*: Households

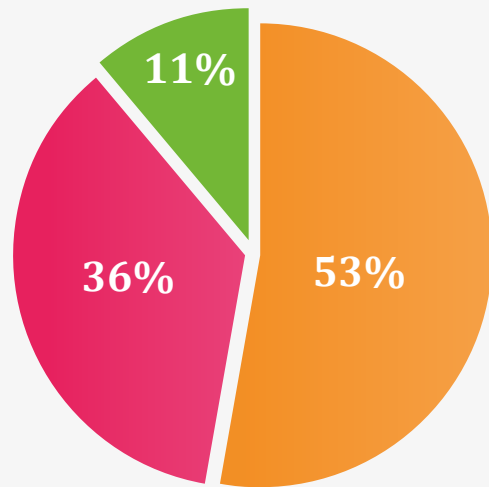


\*Based on random sampling

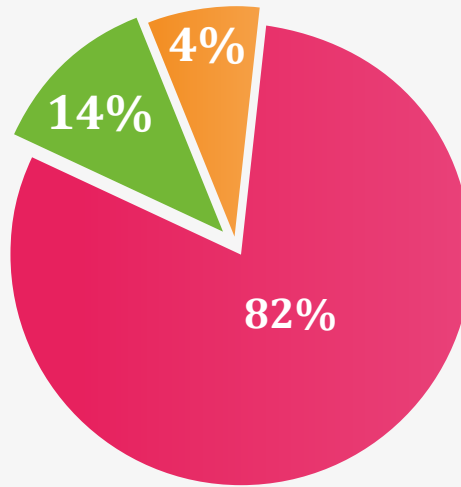
The background features a repeating geometric pattern of squares, each divided diagonally from the top-left to the bottom-right. The squares are filled with various shades of pink and red, creating a vibrant, textured effect. The colors range from light, pale pinks to deep, rich reds.

**Our Money Matters**

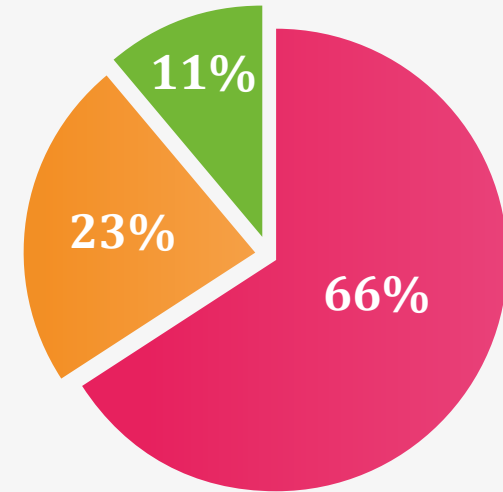
# Our Sectoral Expenditure



2012




2013



2014

 Livelihoods

 Education; Health; Water, Sanitation & Hygiene

 Emergency Response

The background is a complex geometric pattern of overlapping squares and triangles in various shades of purple, from dark to light. The text is centered in the middle of the image.

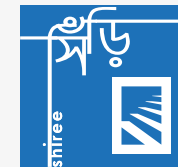
# **Our Partners & Donors**

# Our Partners & Donors

## Local Partners



## Donors



European Union



Humanitarian Aid  
and Civil Protection



Empowered lives.  
Resilient nations.



*We are grateful to all individuals globally who have supported our work over the years.*



**We are committed to a  
world without poverty.**

**To know more about our work,  
visit [www.concern.net](http://www.concern.net)**

**Central Offices of Concern Worldwide, Bangladesh :**

- |   |  |
|---|--|
| ▶ Country Office<br>House 15 SW (D), Road 7, Gulshan 1<br>Dhaka 1212, Bangladesh<br>Tel: +880 2 881 6923<br>Fax: +880 2 881 7517<br>Email: <a href="mailto:bangladesh.info@concern.net">bangladesh.info@concern.net</a> | ▶ Head Office<br>52-55 Lower Camden Street<br>Dublin 2, Republic of Ireland<br>Tel: +353 1 417 7700<br>Fax: +353 1 475 7362<br>Email: <a href="mailto:info@concern.net">info@concern.net</a> |
|---|--|

---

**Regional Offices of Concern Worldwide, Bangladesh :**

- |   |   |   |   |
|---|---|---|---|
| ▶ Rajshahi Office<br>Plot 343, Road 4<br>PS: Boalia, Padma R/A<br>Rajshahi 6207 | ▶ Khulna Office<br>Flat B1, House 113-08, Road 2<br>Nirjan R/A, Nirala<br>Khulna 9100 | ▶ Kishoregonj Office<br>1st Floor, Priangon<br>East Tarrapasa (Boila), Karimganj Road<br>Kishoregonj 2300 | ▶ Saidpur Office<br>Munshipara<br>PO & PS: Saidpur 5310<br>Saidpur Nilphamari |
|---|---|---|---|